

Cushman Pond Dive Report for Saturday August 24th 2015

Conditions: -

Air temp mid-70's⁰ and partly cloudy; Surface water temp 77⁰;

Thermocline at 10' depth; Estimated water temp at 10'= 60⁰;

Water visibility 10', At depth approximately 6-8 at start, <2' after silt disturbed.

Participants:

3 divers - (Scott Gregory, Doug Faille, Denise Blanchette-DEP)

2 Boat & Barge Support- (John Mc Phedran – DEP, Gene Spender- LIPPC)

5 Total Participants

Dive Summary:

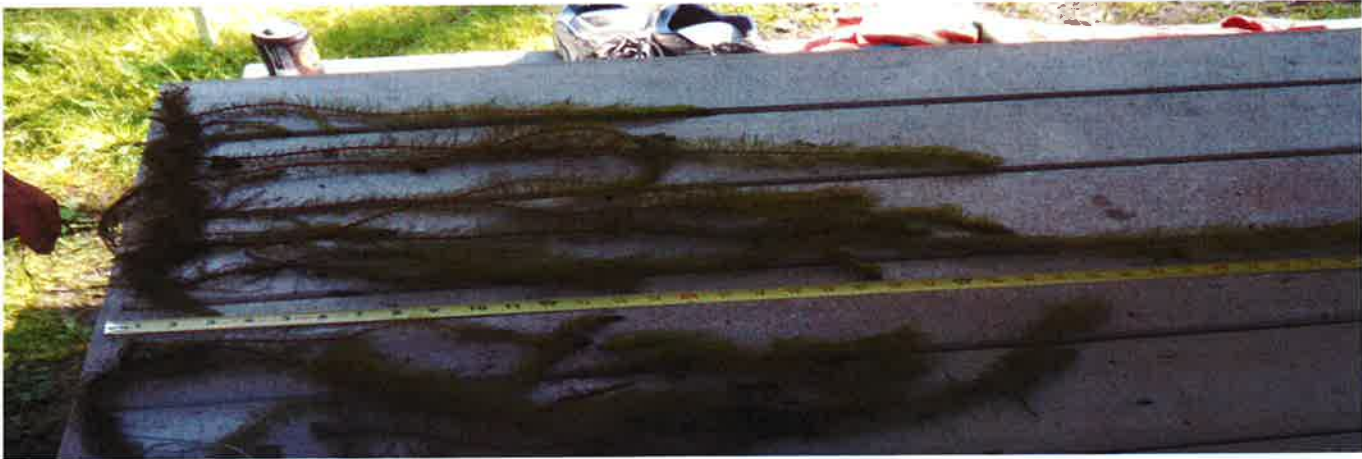
On August 24th the Maine Department of Environmental Protection (DEP) conducted a milfoil survey of Cushman Pond. Also participating were members of the Cushman Pond volunteers and LIPPC.

The survey found and harvested **1 plant** for a total volume of **two quarts**. A second plant was also found but it was lost before harvest due to a marker problem.

The DEP gas-powered boat was used to drag two divers in a search area covering the cove and extending to a line between the Nelson dock and the Rowe slide at their camp. The survey used GPS to mark the transects with limited success due to slow update of the GPS data.

Plant #1 was found at the far edge of the cove bordering the deeper waters in about 12 to 14' of water. It consisted of one large plant with multiple stems with one approximately 48" in length and shared roots with two smaller plants for a total volume of approximately 2 quarts. Because of the common root structure it was counted as a single plant. This was by far the largest plant harvested this year. It was clearly using a broken stem to root and grow. The grouping was harvested and matted with mat #7.

A couple views of the plants:



Root System:



The second "misplaced" plant was located in an area between Saturday's deep water find and Fulshaw's dock. A rough GPS location of the plant was provided by the DEP. An ad hoc survey is planned for Saturday where one of Gene Spender's boats with GPS and SONAR will be used to attempt to find the plant as well as any others. If any plants are found they will be marked, harvested and matted by a scuba or hookah diver.

Diver hours for this survey were 7 hours each for Scott Gregory and Doug Faille which includes both set up time, diving time, boat assistance and moving mats as each supported the effort for an entire day. Year To Date Diver Hours are: 53.5 Hours with 23.5 for Doug Faille, 23.5 for Scott Gregory and 6.5 for Jackey Bailey. DEP hours are excluded from these values.

Hookah Hours for this survey were a total of 0. Year To Date Hookah hours are: 24 with 12 each for Bryant and Greg Buck.

Volunteer hours totaled 10 including the preparation of this report. Year to Date Volunteer hours are: 250 hours.

Mats: 1 mat (#7) was deployed ; Details are included in the charts at the end of this report.

Approximate plant locations of this week's dives and Year To Date Dives are displayed in the attached charts.

While finding these deepwater plants increases our search area and might seem to be a setback, it is also forcing us to change our practices and use additional technology and tools that will ultimately make us successful. During our August 22nd survey no plants were found in the recurring shallow water areas and only 3 Plants were found in deeper water. As someone joked, "we've effectively chased the milfoil from the shallow areas to the deeper water and now we're harvesting it there."

Thanks for you continued support.

Jim Buck

Cushman Pond Milfoil Surveys

2014 Month End August Results

<u>Date:</u>	<u>31-May</u>	<u>28-Jun</u>	<u>26-Jul</u>	<u>9-Aug</u>	<u>30-Aug</u>		<u>2014 Results</u>	<u>%</u>
Location:								
Cove/Town Landing	5	6	9	9	6		35	64%
Deep Water							0	0%
SE Weedbed	1	10	4	0	0		15	27%
NorthWest Shore	0	0	0	1	2		3	5%
South Shore	0	0	1	1	0		2	4%
Total	6	16	14	11	8		55	100%
%	11%	29%	25%	20%	15%		100%	
Est Volume (Gallons)	0.50	2.50	2.00	2.00	1.50		8.50	Gallons
# Participants:	5	19	13	27	21		85	

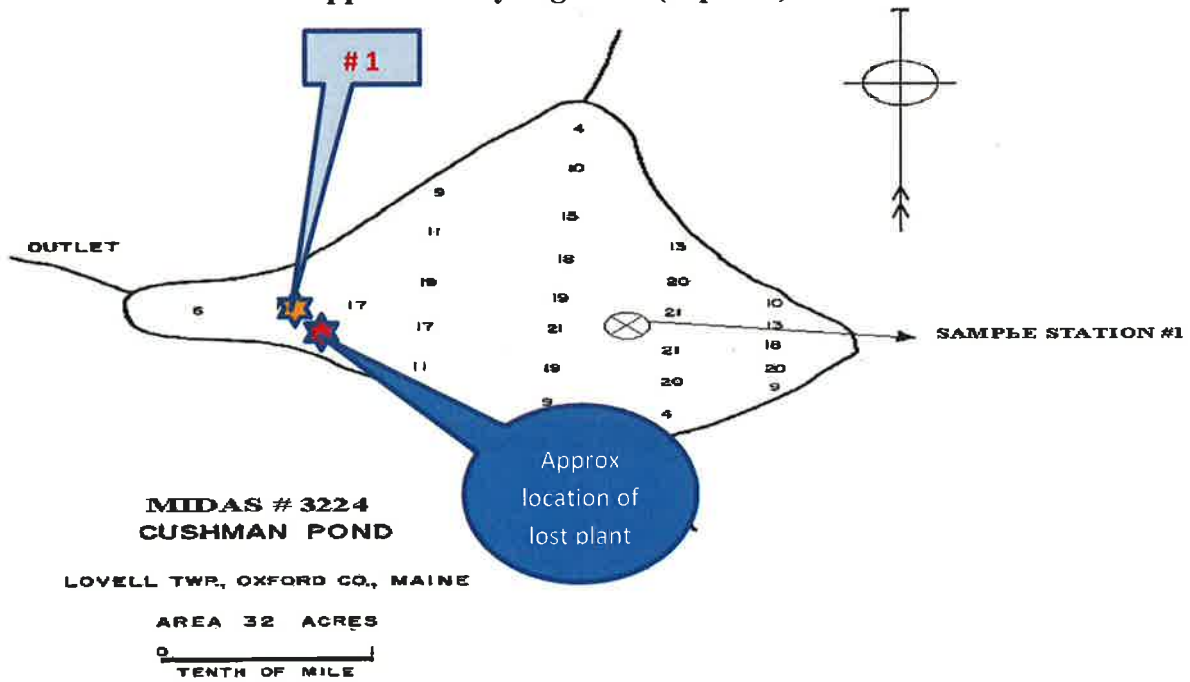
2015 Year To Date (YTD) Results

<u>Date:</u>	<u>24-May</u>	<u>13-Jun</u>	<u>4-Jul</u>	<u>18-Jul</u>	<u>8-Aug</u>	<u>22-Aug</u>	<u>24-Aug</u>	<u>YTD Total</u>	<u>%</u>
Location:									
Cove/Town Landing	4	4	1	4	2	1	1	17	63%
Deep Water						1		1	4%
SE Weedbed	0	1	3	0	1	1		6	22%
NorthWest Shore	0	0	0	1	1			2	7%
South Shore	0	0	0	1				1	4%
Total	4	5	4	6	4	3	1	27	100%
%	15%	20%	15%	24%	15%	11%	4%	100%	
Est Volume (Gallons)	0.25	0.50	0.25	0.25	0.25	0.25	0.50	2.25	Gallons
# Participants:	17	14	40	15	32	20	3	141	

	YTD August 2014	YTD August 2015	% Change
# Plants	55	27	-51% Reduction
Volume (Quarts)	34.00	9.00	-74% Reduction
# Survey Participants	85	141	66% Increase

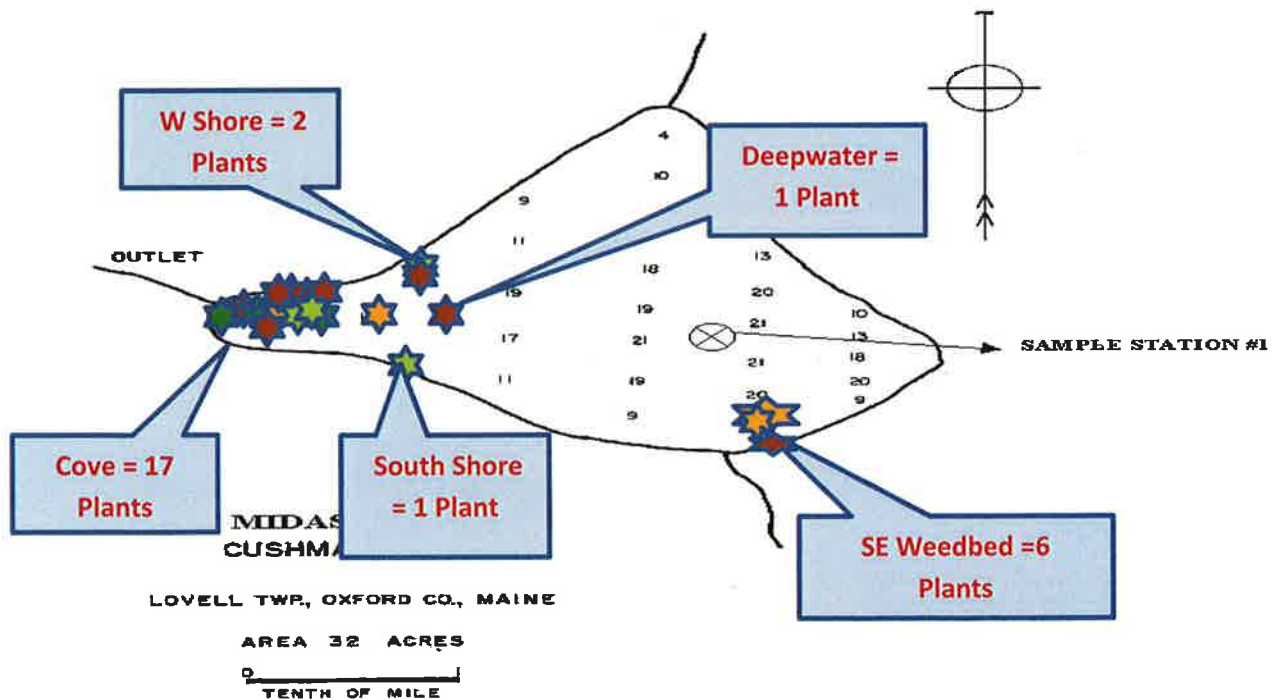
Cushman Pond Milfoil Sightings for August 24, 2015

= 1 Plant Harvested for approximately .5 gallons (2 quarts)



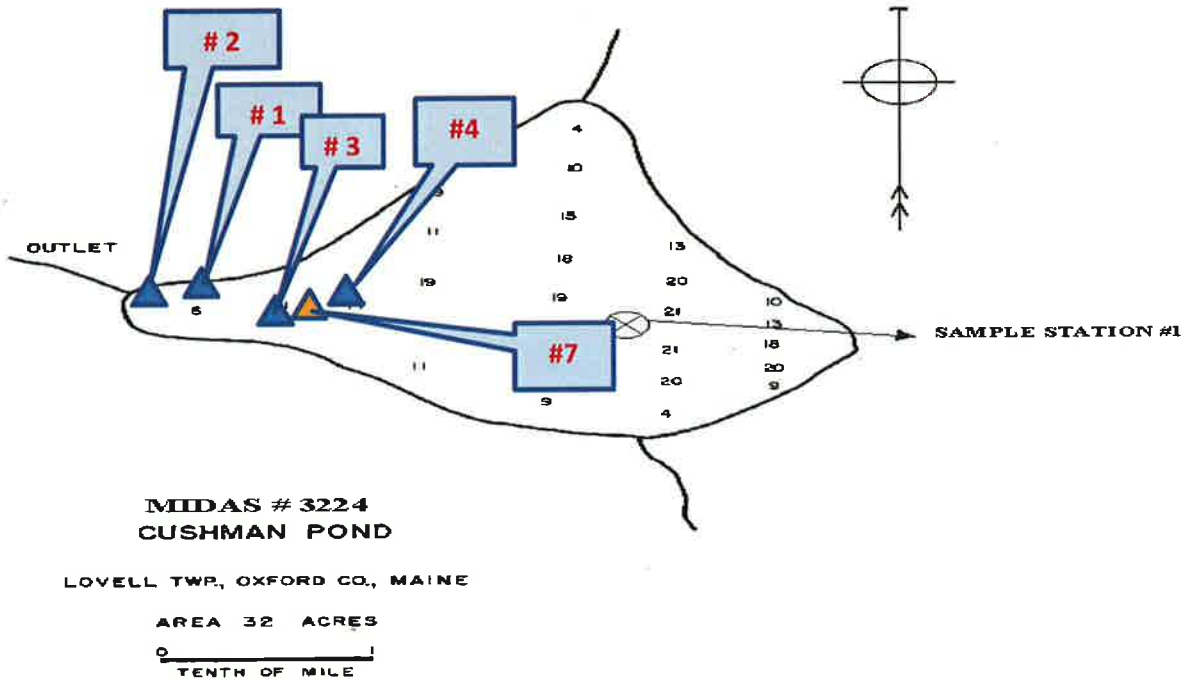
Cushman Pond Milfoil 2015 Sightings through August 24, 2015

= 27 Plants Harvested for approximately 2.25 gallons (9 quarts)



Cushman Pond Mat Locations as of August 24, 2015

= 1 Mat Deployed #7, 0 Mats Removed



Mat #	Deployed	Area	Location	Plant #	Plant Size	Removed
1	8/22/2015	Cove	Cope- Leaning MapleTree, Prior plant find	8/8/15 #2,3	14",16"	
2	8/22/2015	Cove	rock outcrop- 75' from dam, Prior plant find	6/14/2015 #2	14"	
3	8/22/2015	Cove	30' East of Buoy	8/22/15 #3	6"	
4	8/22/2015	Deepwater	250' from Buoy	8/22/15 #4	30"	
5						
6						
7	8/24/2015	Cove	DEP Find Edge of Cove, buoy - deepwater	8/24/15 #1	48"	